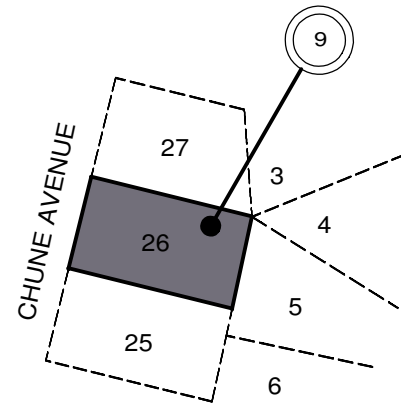


CODE

SKAAL/SCALE 1:2000



Annexure 9: Special for Overnight Accommodation.

- a conference facility of maximum of 50m<sup>2</sup> be permissible,
- a restaurant of maximum 100m<sup>2</sup> for residents be allowed,
- a Bar of maximum of 40m<sup>2</sup> for residents be permissible,
- Coverage of 80% be permissible,
- F.A.R of 0,8 be permissible,
- 1 dust free parking per bedroom suite be permissible, and
- 6/100m<sup>2</sup> GLFA parking for visitors be permissible.

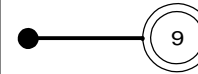
ERF 26 PENINA PARK

VERWYSING/REFERENCE

SPESIAAL  
SPECIAL



Bylae  
Annexure



VIR GOEDKEURING AANBEVEEL  
RECOMMENDED FOR APPROVAL

POLOKWANE MUNICIPALITY

GOEDGEKEUR  
APPROVED